

**Registration**  
**Deadline :**  
20 Feb, 2019  
**Registration Fees :**  
3000  
**Seat Availability:**  
15 Participants:

# Laparoscopic Bile Duct Exploration

Hands-on Cholangiography and Choledochoscopy Course

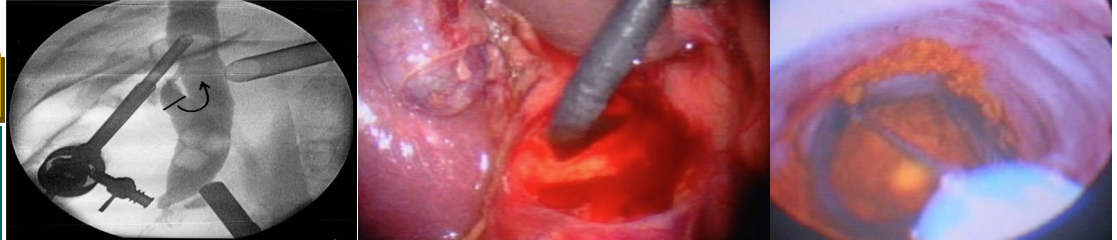
Date: 2<sup>nd</sup> - 3<sup>rd</sup> Mar, 2019 CME : 15 Points

"Accredited by the Royal College of Surgeons of England & the Association of Laparoscopic Surgeons of Great Britain"

## Faculty



**Mr. Ahmad Nassar, FRCS**  
Consultant Upper GI and  
Laparoscopic Surgeon,  
University Hospital Monklands,  
Lanarkshire  
Hon. Senior Clinical Lecturer,  
University of Glasgow,  
Association of Laparoscopic  
Surgeons of Great Britain and  
Ireland



### Course Objectives:

Advanced procedure-based course highlighting the technical and logistical aspects of one session laparoscopic exploration of the bile duct and complex gall bladder surgery. A course designed for consultants and senior trainees with the skills of routine and emergency laparoscopic cholecystectomy who may already have experience with intra-operative cholangiography. The candidates are made familiar with the technical aspects through short interactive talks. The course has a major practical hands-on component with opportunity to practice cholangiography, trans-cystic duct cannulation and exploration, choledochotomy exploration and methods of biliary drainage. There will be emphasis on the handling and optimal use of 3mm & 5mm choledochoscopes. Well designed animal tissue models allow for task repetition and skills development and consolidation. Adequate time is dedicated to detailed discussions of technical aspects utilising extensive video material selected from 1250 Laparoscopic bile duct explorations. ISCP curriculum considers bile duct exploration a mandatory procedure and the technical skills required for ST6 (level 3) to ST8 (level 4)

### Program: Day 1 CHOLANGIOGRAPHY AND BILE DUCT EXPLORATION

- Single session management of bile duct stones: Philosophy, evidence, training
- Service design, instruments and logistics
- IOC: methods, interpretation and trouble shooting.
- Practical 1: Cholangiography, cannulation, catheters, clamps vs free cannula
- Practical 2: Handling and care of the 3mm and 5mm choledochoscopes Hands on
- Transcystic exploration: indications and case selection.
- Transcystic exploration: trawling, types of baskets, image-guided
- Practical 3: Basket in catheter, choledochoscopy, Intrahepatic exploration ,Wiper –Blade Manoeuvre
- Choledochotomy exploration: indications and techniques.
- Practical 4: Choledochotomy exploration: site, size, optimal use of instruments, and different techniques of stone extraction. Hands on
- Biliary drainage: primary closure vs transcystic or T-Tube drainage. Inserting and securing drains
- Postoperative care: cholangiography, follow-up.
- Practical 5: Choledochotomy, stone extraction, biliary drainage and suturing. Hands on

### Day2 ADVANCED CHOLECYSTECTOMY and DUCTAL EXPLORATION

- Towards a truly minimally invasive cholecystectomy. Can we minimise complications?
- Optimal management of biliary emergencies, setup, referral protocols and scheduling
- When do we need MRCP and ERCP, The role of conservative management.
- Optimising access, adhesiolysis and closure to optimise operative complications and incisional hernia
- Practical 1: Case presentations and Interactive discussion
- The Difficult Choelcystectomy: How difficult is difficult? The rationale for operative Difficulty Grading
- The Critical View of Safety, how safe?
- Complex cases: Mirizzi Syndrome, cholecysto-enteric fistula, previous biliary surgery.
- Salvage strategies: intra-vesical approach, Fundus-First dissection, subtotal cholecystectomy, conversion
- Practical 2: complex cholecystectomies, interactive discussion
- Biliary drainage or primary closure and Postoperative care protocols & Conservative management: when do we need MRCP and ERCP?

Kindly Supported by



## VENUE

Clinical & Surgical Training  
Center, M31– Basement,  
Medical & Health Science  
College Campus, University  
of Sharjah  
Tel: +971 6 505 7576 / 7579  
Email: ssi@sharjah.ac.ae;  
ctc@sharjah.ac.ae  
Website : www.uosctc.ae